

Remco Product Selection Guide

Vikan Squeegees



Remco is the exclusive Vikan Partner in the United States and Canada

Blade Options



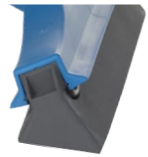
■ **Single Blade Ultra Hygiene** — Zero seams or cracks for bacteria to hide, providing the highest level of hygiene. The hygienic design has smooth, rounded surfaces with elongated ends to protect the FDA compliant rubber blade and guard against splashes.



■ **Double Blade Ultra Hygiene** - Efficiently collects food particles with two flexible non-porous FDA compliant rubber blades. These squeegees feature replaceable blade cassettes designed to move liquid and debris on most surfaces found in food production facilities



■ **Double Blade Foam Rubber** — The foam rubber blades make this squeegee the most effective at moving large amounts of liquid on smooth and tiled surfaces. The soft rubber efficiently reaches into all spaces on floors, such as grout lines.



■ **Ceiling Squeegee** — Squeegee with drain holes effectively removes condensation from ceilings and pipes. Collection of condensation prevents moisture from dripping into food product or on costly machinery.

Lengths



10" Bench Squeegee

- Single Blade Ultra Hygiene
- Double Blade Ultra Hygiene
- Double Blade Foam Rubber

16" Squeegee

- Single Blade Ultra Hygiene
- Double Blade Foam Rubber
- Ceiling Squeegee

20" Squeegee

- Single Blade Ultra Hygiene
- Double Blade Ultra Hygiene
- Double Blade Foam Rubber
- Double Blade Foam Rubber Swivel Neck

24" Squeegee

- Single Blade Ultra Hygiene
- Double Blade Ultra Hygiene
- Double Blade Foam Rubber
- Double Blade Foam Rubber Swivel Neck

28" Squeegee

- Single Blade Ultra Hygiene
- Double Blade Ultra Hygiene
- Double Blade Foam Rubber
- Double Blade Foam Rubber Swivel Neck



Ultra Hygiene Single Blade



- Ultra hygiene single blade squeegees have a very soft and effective rubber lip, which ensures efficient cleaning of floors and other surfaces. The rubber lip is angled to facilitate cleaning close to walls and around equipment without any problems. The squeegee's splash guard prevents the liquid from splashing onto the dried surface.
- The ultra hygiene bench squeegee is a fully molded single bladed squeegee with a soft and flexible blade which is easy to keep completely clean. This squeegee is ideal for removing excess water and food debris from food preparation surfaces.
- Ultra hygiene squeegees utilize a hygienic proprietary thread that allows for pairing with any Vikan brand handle.



7140x
16" Ultra Hygiene Squeegee



7150x
20" Ultra Hygiene Squeegee



7160x
24" Ultra Hygiene Squeegee



7170x
28" Ultra Hygiene Squeegee



7125x
10" Ultra Hygiene Bench Squeegee



Ultra Hygiene Double Blade



- The double-blade non-porous durable rubber design of these squeegees makes them effective in removing liquid from all types of floors; e.g. textured/non-slip, tiles, epoxy, cement.
- Double blade Ultra Hygiene bench squeegees are used for drying surfaces (e.g. after sanitizing process) or for pushing food from one area to another. They are very effective in dry production areas.
- The blades are part of a cassette and can be removed for easy cleaning. When the blades become worn, replacement blade cassettes are available in each size making the Ultra Hygiene double blade squeegees a very economical choice.



7713x
20" Double Blade
Ultra Hygiene Squeegee



7714x
24" Double Blade
Ultra Hygiene Squeegee

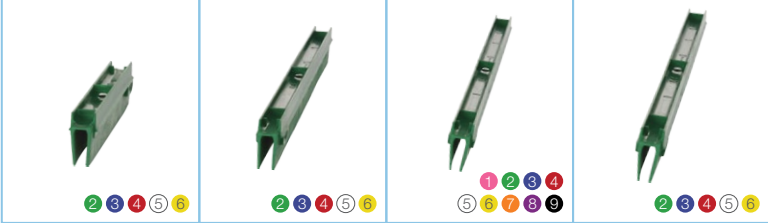


7715x
28" Double Blade
Ultra Hygiene Squeegee



7711x
10" Double Blade Ultra
Hygiene Bench Squeegee

Double Blade Ultra Hygiene Refill Cassettes



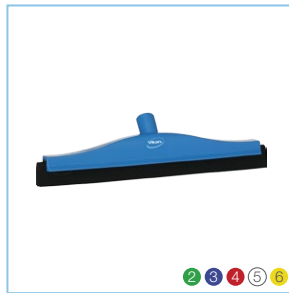
7731x 10" Replacement Cassette
7733x 20" Replacement Cassette
7734x 24" Replacement Cassette
7735x 28" Replacement Cassette



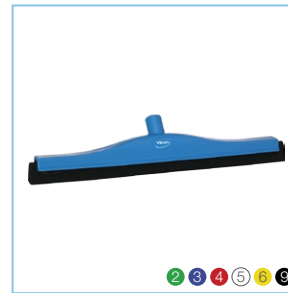
Fixed Head Foam Blade

- Double foam blade squeegees provide effective removal of liquids from all types of flooring.
- The fixed head bench squeegee with white foam blade provides effective removal of liquid from food preparation surfaces.
- Detachable foam blade cassettes allow for easy cleaning as well as cartridge replacement.

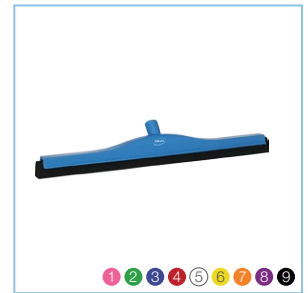
- White foam blades are FDA compliant and safe for food contact.
- Black foam blades are neither FDA compliant nor safe for food contact.



7752x
16" Fixed Head Squeegee



7753x
20" Fixed Head Squeegee

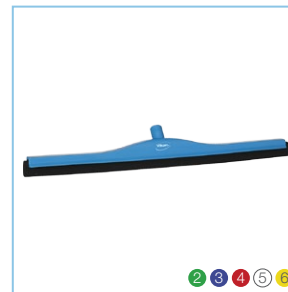


7754x
24" Fixed Head Squeegee

Foam Blade Refill Cassettes



7771x 10" Replacement Bench Cassette
7772x 16" Replacement Cassette
7773x 20" Replacement Cassette
7774x 24" Replacement Cassette
7775x 28" Replacement Cassette



7755x
28" Fixed Head Squeegee



7751x
10" Fixed Head
Bench Squeegee



Swivel Neck Foam Blade

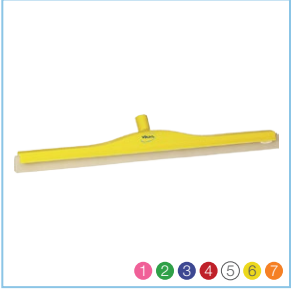
- Swivel neck squeegees are excellent on all types of floors as the soft rubber foam reaches into the spaces on the floor (like grouting between tiles).
- The swivel motion of the neck allows for smooth gliding around corners and stationary equipment.
- The white foam blades allow for easy inspection and are made of FDA compliant material.
- The blade cartridge can easily be removed for cleaning or replacement of a worn blade.



7763x
20" Swivel Neck Squeegee



7764x
24" Swivel Neck Squeegee



7765x
28" Swivel Neck Squeegee

- *White foam blades are FDA compliant and safe for food contact.*
- *Black foam blades are neither FDA compliant nor safe for food contact.*

Foam Blade Refill Cassettes



7773x
20" Replacement Cassette



7774x
24" Replacement Cassette



7775x
28" Replacement Cassette



Ceiling Squeegee

- The ceiling squeegee has drain holes for effective removal of condensation from ceilings and pipes.
- The ceiling squeegee may be paired with Remco brand draining handles or Vikan waterfed handles.
- Remco handle options allow for collection of condensation in bottles (6268B, 6269B) or through a hose.



7716x
Ceiling Squeegee

Remco Products Corporation

4735 West 106th Street
Zionsville, Indiana 46077

PHONE: 317.876.9856 | FAX: 800.585.8619

www.remcoproducts.com

© 2016 Remco Products 8/16 RMC-SG102 | Vikan® is a registered trademark of Vikan A/S. | Remco is the exclusive Vikan Partner in the United States and Canada.

For detailed squeegee measurements, consult Remco's full-line catalog or visit www.remcoproducts.com