

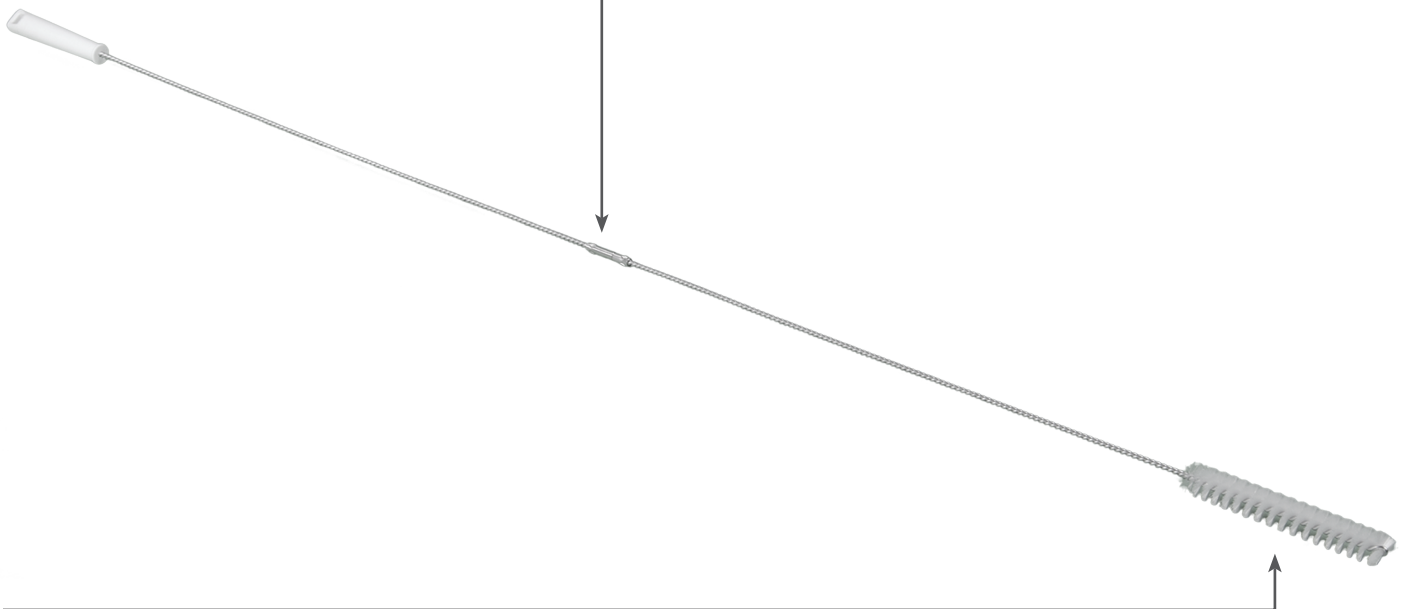
Ø1.0" Tube Brush w/ 5' Flex Handle

Series 53865



Flexible Handle

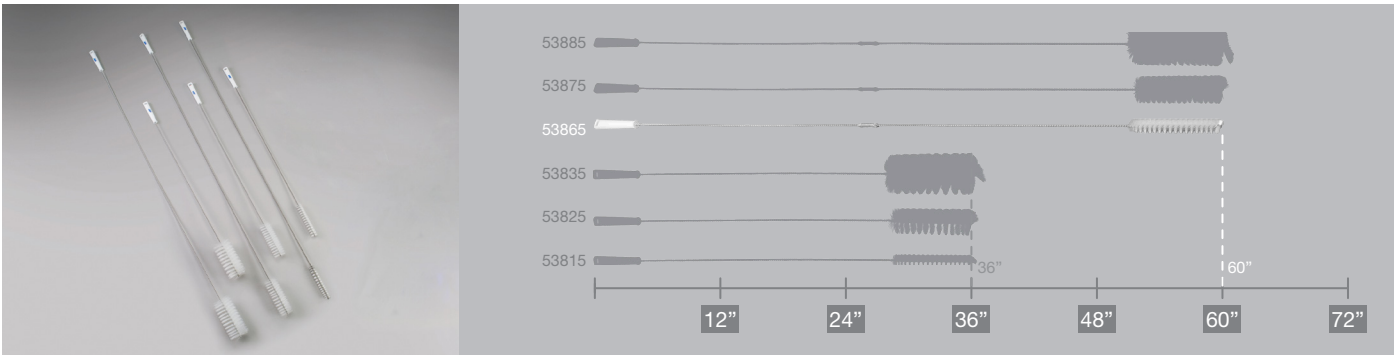
Stainless steel holds bristles tight and allows for cleaning in narrow spaces



Stiff Bristles

Perfect for scrubbing difficult dirt and for wet use with cleaning agents

This tube and valve brush is designed to clean hard-to-reach areas. The stiff bristles are attached to a helically wound stainless-steel shaft, making it strong, FDA-compliant, and chemically resistant.



Ø1.0" Tube Brush w/ 5' Flex Handle

53865

Available in white only

The 5' flex handle lets the tube brush fit in curved pipes easily so the stiff bristles can scrape out tough messes. The brush can also be used with water and a cleaning agent for a washing effect.

Specifications:

Length: 59.8"

Width: 1"

Height: 1"

FDA-Compliant Raw Material: Yes

Material: Polyester/SS/Polypropylene

Unit Weight: 0.5 lbs.

Bristle Type: Stiff

Colors

When ordering, add the color digit to the base part number to denote color.



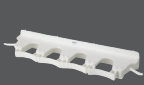
Fully updated product specifications are available at Vikan.com.

The Color-Coding System

Remco and Vikan® brands offer an integrated color-coding system to help mitigate the risk of cross-contamination in food processing facilities. With an array of color-coded tools and storage brackets, and years of experience building effective color-coding systems, the experts at Remco Products Corporation can help you effectively apply color-coding to divide and identify different zones or processing tasks. As a result, workers can more easily comply with material handling and hygienic cleaning procedures to maintain stringent food safety standards.



Please see the full-line catalog for a complete list of Remco™ and Vikan® products.



Brackets



Brooms



Brushes



Shovels



Scrapers



Squeegees



Tubs



Pails

Remco Products Corporation

4735 West 106th Street
Zionsville, Indiana 46077

PHONE: 317.876.9856 | FAX: 800.585.8619

www.remcoproducts.com

